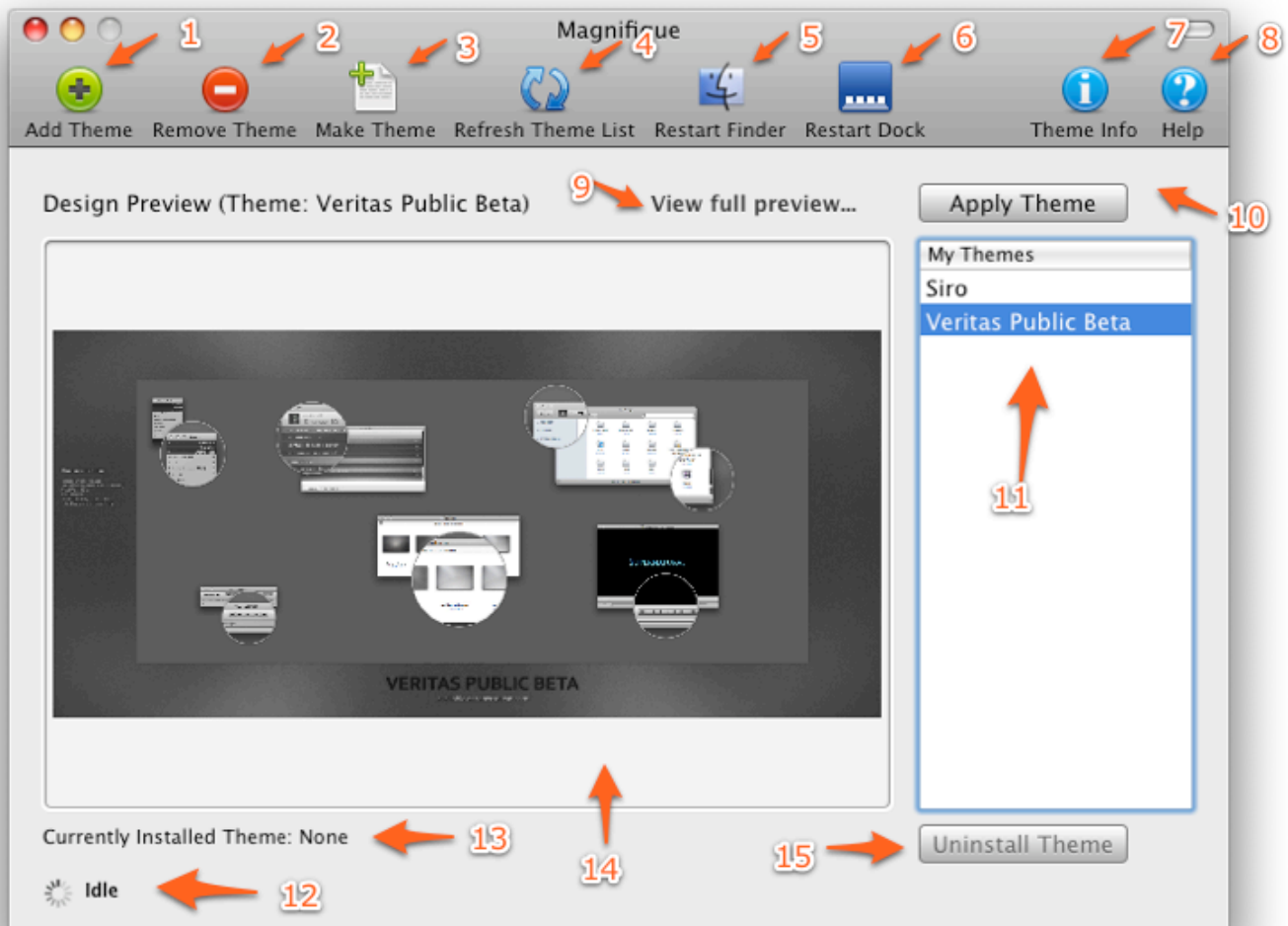


Magnifique User's Guide



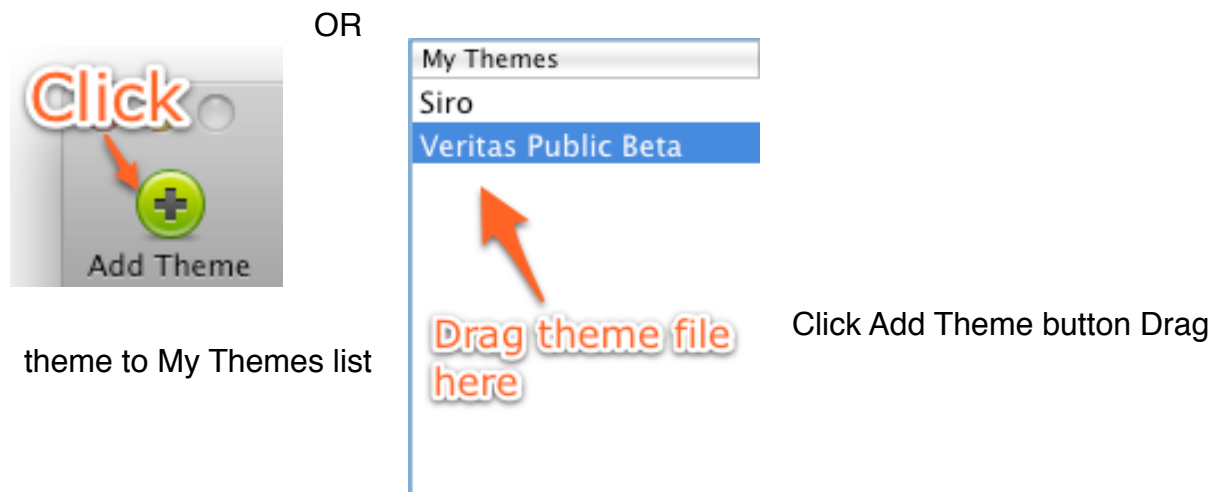
Magnifique is the free theming application from PCWiz Computer that allows anyone to take advantage of the vast repository of themes available for Mac OS X in just a few clicks. **This application is only compatible with OS X 10.5.x!** What does Magnifique mean for theme developers? Its an easy way to distribute your themes to a wider audience. Here's a quick overview of what each function does:

1. Add Theme button. This can be used to add themes to your library
2. Remove Theme deletes the selected theme from your themes directory
3. Create your own Magnifique theme bundle. This will be covered in further detail in the Developer's Guide
4. Refresh the theme list (if you added/removed themes manually while the application is running)
5. Restarts Finder to see the effects of a new theme (same as "killall Finder" Terminal command)
6. Restarts Dock to see any changes to the Dock (same as "killall Dock" in Terminal)

7. Displays information about the theme, including Version, Author, Description, and File List
8. Brings up the user guide (what you are reading now)
9. Opens the full theme preview image in Preview (the one in the Design Preview box is scaled down to fit the window)
10. The Apply Theme button opens a dialog box with options to apply the selected theme (more on this later)
11. My Themes list displays the themes that are currently in your Library
12. Displays information about what the app is doing (progress indicator)
13. Tells you what theme is currently installed
14. Displays a preview of the theme (if theme developer has included a preview image)
15. Uninstalls the currently installed theme (greyed out unless a theme is installed)

Adding Themes

To add themes to your Library:



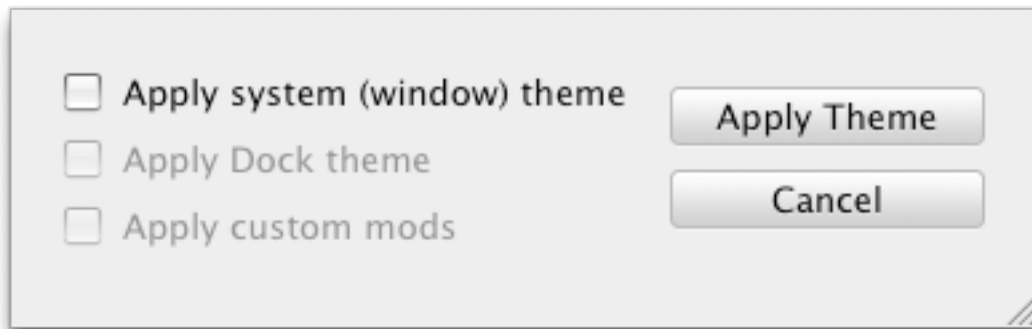
Basically what happens when a theme is “added” is that the theme file is copied to the internal Magnifique Themes folder. Only Magnifique theme files with the **.mfq.plugin extension** are accepted. DO NOT EVER add theme files from people that are not trusted. **These files have the potential to completely destroy your system with a malicious script. Once the theme is added you can delete the original.** Make sure to have plenty of hard disk space ! Themes can vary in size from a small 2MB to huge 50MB complete system themes.

Removing Themes

Deleting a theme is easy, just click on the theme from the My Themes list and click the Remove Theme button (2). It will ask you to confirm, and will then delete the theme. If you want to for some reason delete all your themes then go to the Magnifique menu and click “Delete all themes”

Applying Themes

When you click on a theme and click the “Apply Theme” button you are presented with this dialog:



This offers 3 theme options. The options that are not supported by the theme file will be greyed out. Here is what each option installs:

Apply system (window) theme - This will be the choice for the vast majority of OS X themes. It can install ArtFile.bin, SArtFile.bin, Extras/Extras2.rsrc, AquaUI.bundle, and LeopardUI.bundle

Apply Dock theme - Dock themes can be installed using this. It will install the Dock resource files to /System/Library/CoreServices/Dock.app/Contents/Resources

Apply custom mods - The most flexible option and the most dangerous as well. It can install ANY file to the system. This option will mostly be used to apply mods to applications and such. Read the description of the theme (hopefully the developer specified what is installed with “custom mods”)

Once you have selected your options (All options or a combination of) click Apply Theme. If a previous theme had been installed it will be auto uninstalled and the new one will be applied. To see changes click Restart Finder, and if you modified the Dock, click Restart Dock.

Mix n’ Match Themes

So, what if you want the window theme from one theme, and the dock theme from another? Unfortunately, Magnifique does not support theme layering (to stop damage from occurring to the system it always uninstalls the previous theme before installing another), but there is a way around it. You can create your own “Mix n’ Match” Theme, combining elements from any themes you want to create your own personalized look.

This will be covered in the Developers Guide

Uninstalling a Theme

Uninstalling is easy enough (assuming you have a theme installed), click the Uninstall button at the bottom of the window, confirm, and it will uninstall automatically.

Menu Bar on Themes

If you see a custom menu bar on a theme, chances are that you will have to disable the translucent menubar to see changes. To do this, go to System Preferences >> Desktop & Screensaver, and uncheck the “Translucent menubar” checkbox

Creating your own themes

Interested in being a developer and creating your own themes? Check the Developer’s Guide included with the Magnifique Package.